

## Satellite Packages

600 - 3605 29th Street NE, Calgary, AB T1Y 5W4

Phone: (403) 735-6330 Fax: (403) 735-6335

NOC Support: 1-866-816-4510

Comtech's satellite communication solutions provide the widest, most efficient and secure network available.



### SERVICES

	COMLINK	COMLINK-SCADA	COMLINK <sup>2</sup>	COMLINK <sup>2+</sup>	COMLINK <sup>3</sup>
Data Speed Down	512K	512K	1.024M	1.024M	1.5M
Data Speed Up	128K	256K	128K	256K	256K

### FAP (Fair Access Policy)

	COMLINK	COMLINK-SCADA	COMLINK <sup>2</sup>	COMLINK <sup>2+</sup>	COMLINK <sup>3</sup>
Remote Receive	1.5 GB	No Limit	3.0 GB	6.0 GB	12.0 GB
Remote Transmit	0.5 GB	No Limit	1.0 GB	2.0 GB	5.0 GB

### SERVICE RATES

	COMLINK	COMLINK-SCADA	COMLINK <sup>2</sup>	COMLINK <sup>2+</sup>	COMLINK <sup>3</sup>
1 Year Term	\$350	\$450	\$550	\$750	\$1,600
2 Year Term	\$300	\$350	\$450	\$650	\$1,350
3 Year Term	\$250	\$300	\$400	\$550	\$1,150
No Term (M – M)	\$500	\$600	\$750	\$1,000	\$2,000

### RENTAL RATES (Includes service and terminal)

	COMLINK	COMLINK-SCADA	COMLINK <sup>2</sup>	COMLINK <sup>2+</sup>	COMLINK <sup>3</sup>
Daily	\$40	\$50	\$60	\$70	\$125
Monthly	\$1,000	\$1,250	\$1,500	\$1,750	\$2,500

### FEATURES

	COMLINK	COMLINK-SCADA	COMLINK <sup>2</sup>	COMLINK <sup>2+</sup>	COMLINK <sup>3</sup>
SCADA Traffic Only	No	Yes	No	No	No
Optimized Latency	No	Yes	No	No	No
Optimized Channel Efficiency	Yes	No	Yes	Yes	Yes

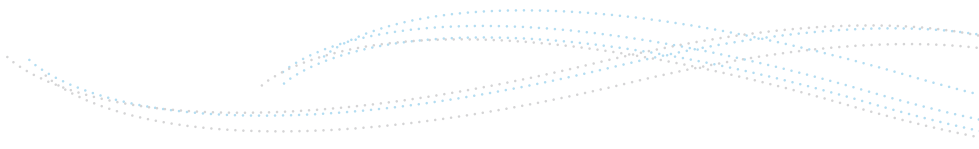
### COMLINK-SCADA BENEFITS

- Scada Traffic only
- Deterministic bandwidth allocation
- Monitored and managed for reduced latency
- Optimized Latency (lowest)
- Isolated from bursting traffic
- Optimized quality of service for Scada traffic
- Deterministic latency

### SYSTEM / CONNECTION OPTION 1

	COMLINK	COMLINK-SCADA	COMLINK <sup>2</sup>	COMLINK <sup>2+</sup>	COMLINK <sup>3</sup>
Internet Fee Included	Yes	Yes	Yes	Yes	Yes
Internet Usage Included	Yes	Yes	Yes	Yes	Yes

- Available upon request



## Satellite Packages

600 - 3605 29th Street NE, Calgary, AB T1Y 5W4

Phone: (403) 735-6330 Fax: (403) 735-6335

NOC Support: 1-866-816-4510

SYSTEM / CONNECTION OPTION 2	COMLINK	COMLINK-SCADA	COMLINK <sup>2</sup>	COMLINK <sup>2+</sup>	COMLINK <sup>3</sup>
Private Network Gateway Fee (PNG)	\$35	\$35	\$35	\$35	\$35
Fiber Usage	\$250	\$250	\$250	\$250	\$250
Voice Telephony					
G723	\$100 / line	Not Supported	\$100 / line	\$100 / line	\$100 / line
G729	\$200 / line	Not Supported	\$200 / line	\$200 / line	\$200 / line
G711	Not Supported	Not Supported	Not Supported	Not Supported	Not Supported
QoS	-	-	2 Rules	2 Rules	2 Rules

### FULLY-MANAGED SERVICE

Monthly Fee	\$100	\$100	\$100	\$100	\$100
-------------	-------	-------	-------	-------	-------

### BASIC MANAGED SERVICE

Monthly Fee	\$50	\$50	\$50	\$50	\$50
Installation	\$1,000	\$1,000	\$1,000	\$1,000	\$1,000

- Available upon request

### Infinity 5200 Series Package

Includes:	HARDWARE	LABOUR
	\$5,200	\$1,000

- Infinity 5200 Satellite router
- 1.2M Andrew Dish
- 100' Comscope 5782 RG6 Cabling
- 2 Watt BUC
- 100' Comscope 5782 RG6 Cabling
- LNB

### OTC PNG Network Build Cost

• Installation charges do not include associated travel and living allowances (if applicable).	\$1,000
--	---------

#### Equipment FOB Calgary

Installation typically 30 to 45 days from receipt of signed contract and receipt of deposits.

Install fee excludes shipping, handling, travel, lodging and activation (four hour max. standard install time).

On site servicing (when applicable) includes up to four hours driving time from the nearest Comtech service location.

Service pricing determined on amount of data transferred, limits set by Comtech's Fair Access Policy (FAP).

Exceeding FAP in either the Transmit or Receive may result in a service degradation or excess usage charges.

If FAP is continually exceeded Comtech, at its discretion, may automatically moved up to appropriate service level.

Customer can pre-arrange excess usage with Comtech on a as needed basis for lower rates.

Some upgrades required for higher data rates may require on site equipment upgrades.

Voice lines are lines per terminal and lines must be located with the satellite terminal.

Addition of voice services may require the specification of CIR rates or QoS rules to ensure reliable voice operation.

QoS for specific applications or terminals may be optionally provided. Comtech can provide QoS Rules to Prioritize some data traffic to meet customers needs.

CIR (Committed Information Rate) is dedicated Satellite Bandwidth per terminal.

Quote valid for 30 days.